



Knowledge Exchange

Pathways to Open Scholarship
30 November & 1 December 2015

Seminar Program

www.knowledge-exchange.info

MONDAY, 30. NOVEMBER 2015

Location: Wanha Satama: Entrance, Kanavakatu 5

11:30 Registration and lunch in street style

13:00–13:50 Welcome & Introduction

Wanha Satama · plenary room

13:00 Welcome Message by the host · [Kimmo Koski, CSC](#)
Introduction to Knowledge Exchange · [Bas Cordewener, Knowledge Exchange](#)
Introduction to goals and practical issues

13:20 Open Scholarship: What does it mean? Introductory provocation · [Sascha Friesike, Alexander von Humboldt Institute for Internet and Society](#)

13:50 Short break with coffee and smoothie to go

14:00–16:00 Open Scholarship: Potentials and Challenges

Wanha Satama · plenary room

14:00 Open plenary discussion on four central themes · **Moderator:** [Bill Thompson](#)

Theme 1 – Benefits, risks & limitations of Open Scholarship · [Elke Greifeneder, IBI Berlin](#)

Theme 2 – Success as a researcher · N.N

Theme 3 – Technology · [Oscar Corcho, Universidad Politécnica, Madrid](#)

Theme 4 – Publishing and publication Services · [Tony Hey, STFC, UK](#)

One "open seat" for people from the audience

15:00 »The 5-Minutes-Madness« – quick presentation of success cases and initiatives for each of the central themes

Theme 1: [Neil Jacobs, Jisc](#)

Theme 1: [Heidi Lane, University of Helsinki](#)

Theme 2: [Clifford Tatum, Centre for Science and Technology Studies, University of Leiden](#)

Theme 2: [Lambert Heller, TIB Hannover](#)

Theme 3: [Ingrid Dillo, DANS](#)

Theme 3: [Jenni Hyppölä, CSC Finland](#)

Theme 4: [Caroline Edwards, Birkbeck, London](#)

Theme 4: [Daniel Mietchen, NIH](#)

16:00–16:30 Coffee break and networking

16:30–18:00 Exploring Four Pathways to Open Scholarship (part I)

Wanha Satama · [Breakout Rooms]

16:30 Breakout group discussions on the four themes:
Theme 1 – Benefits, risks and limitations of Open Scholarship · **chair:** [Wolf-Tilo Balke, Technische Universität Braunschweig](#)

Theme 2 – Success as a researcher · **chair:** [John Doove, SURFmarket](#)

Theme 3 – Technology · **chair:** [Oscar Corcho, Universidad Politécnica, Madrid](#)

Theme 4 – Publishing and publication Services · **chair:** [Rachel Bruce, Jisc](#)

18:00 Time to relax

from 19:00 Evening Programme

Wanha Satama · Entrance: Pikku-Satamakatu 3-5

19:00 Welcoming drinks

20:00 KE 10th Anniversary of Knowledge Exchange-Bufferet Dinner

20:00–23:00 (last call 00:30)

TUESDAY, 1. DECEMBER 2015

Location: Katajanokka Hotel: Entrance, Merikasarminkatu 1,

8:30 Morning coffee with Finnish traditional savoury

09:00–10:00 Exploring Four Pathways to Open Scholarship (part II)

Katajanokka Hotel · [Breakout Rooms]

09:00 Breakout groups reconvene: summarising discussions with a shared list of expectations and wishes for each theme

Theme 1 – Benefits, risks and limitations of Open Scholarship
· chair: [Wolf-Tilo Balke](#), [Technische Universität Braunschweig](#)

Theme 2 – Success as a researcher · chair: [John Doove](#),
[SURFmarket](#)

Theme 3 – Technology · chair: [Oscar Corcho](#), [Universidad Politécnica, Madrid](#)

Theme 4 – Publishing and publication Services · chair: [Rachel Bruce](#), [Jisc](#)

10:00 Coffee Break and Networking, History of the hotel presented by hotel management

10:45–12:45 »A letter to Santa Claus« – writing a wish list for the future of open scholarship

Katajanokka Hotel · plenary room

10:45 Summary of the results of the breakout groups · chairs of breakout groups

11:15 Open scholarship: present and future challenges – a commentary · [Fotis Jannidis](#), [University of Würzburg](#)

11:45 Conclusion: combining the results of the breakout groups in a »letter to Santa Claus« · Moderator: [Bill Thompson](#)

12:45–13:00 Farewell

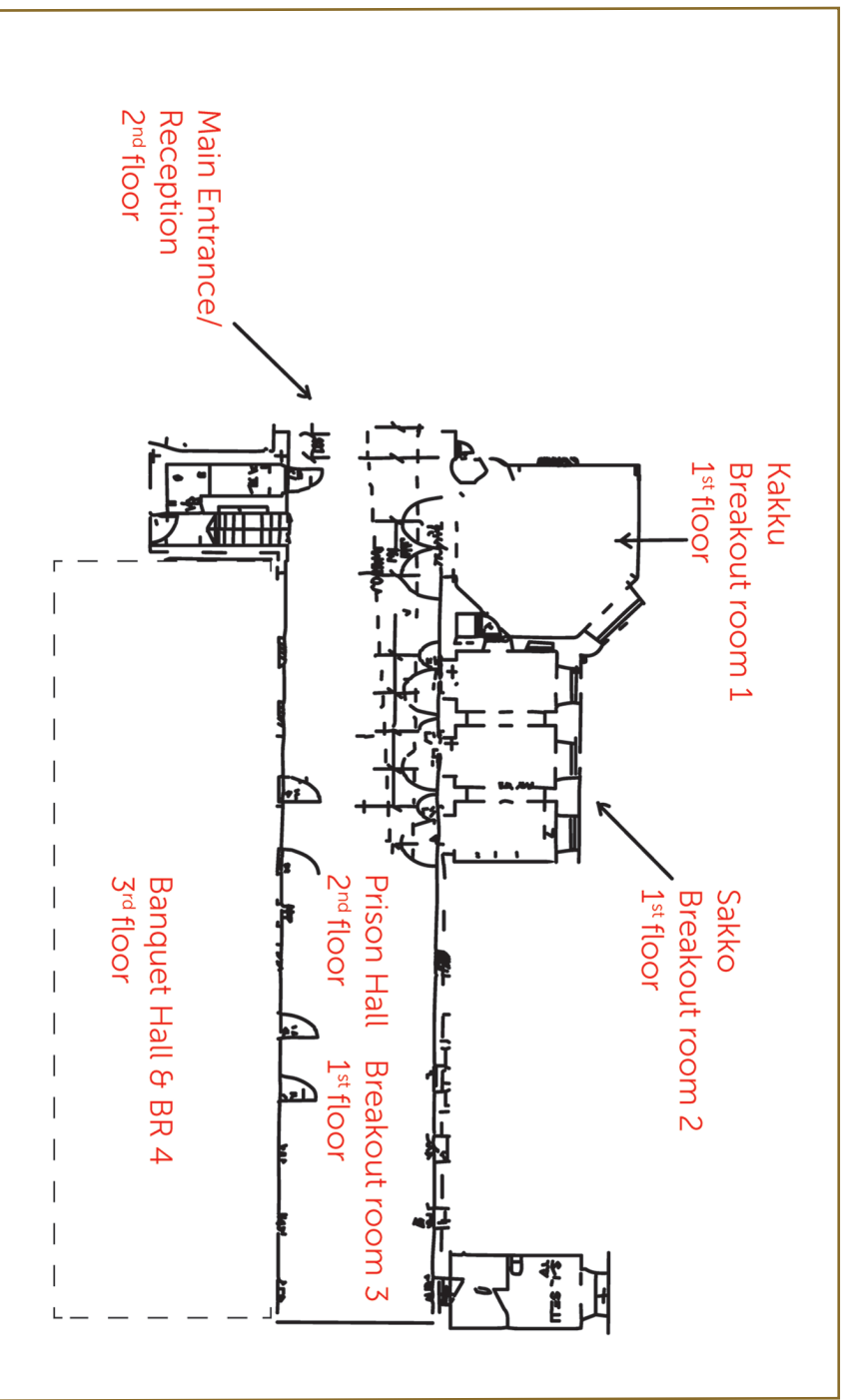
Katajanokka Hotel · plenary room

12:45 Farewell and concluding remarks by the host and by the organisers · [Kimmo Koski](#), [CSC](#) & [Bas Cordewener](#), [KE](#)

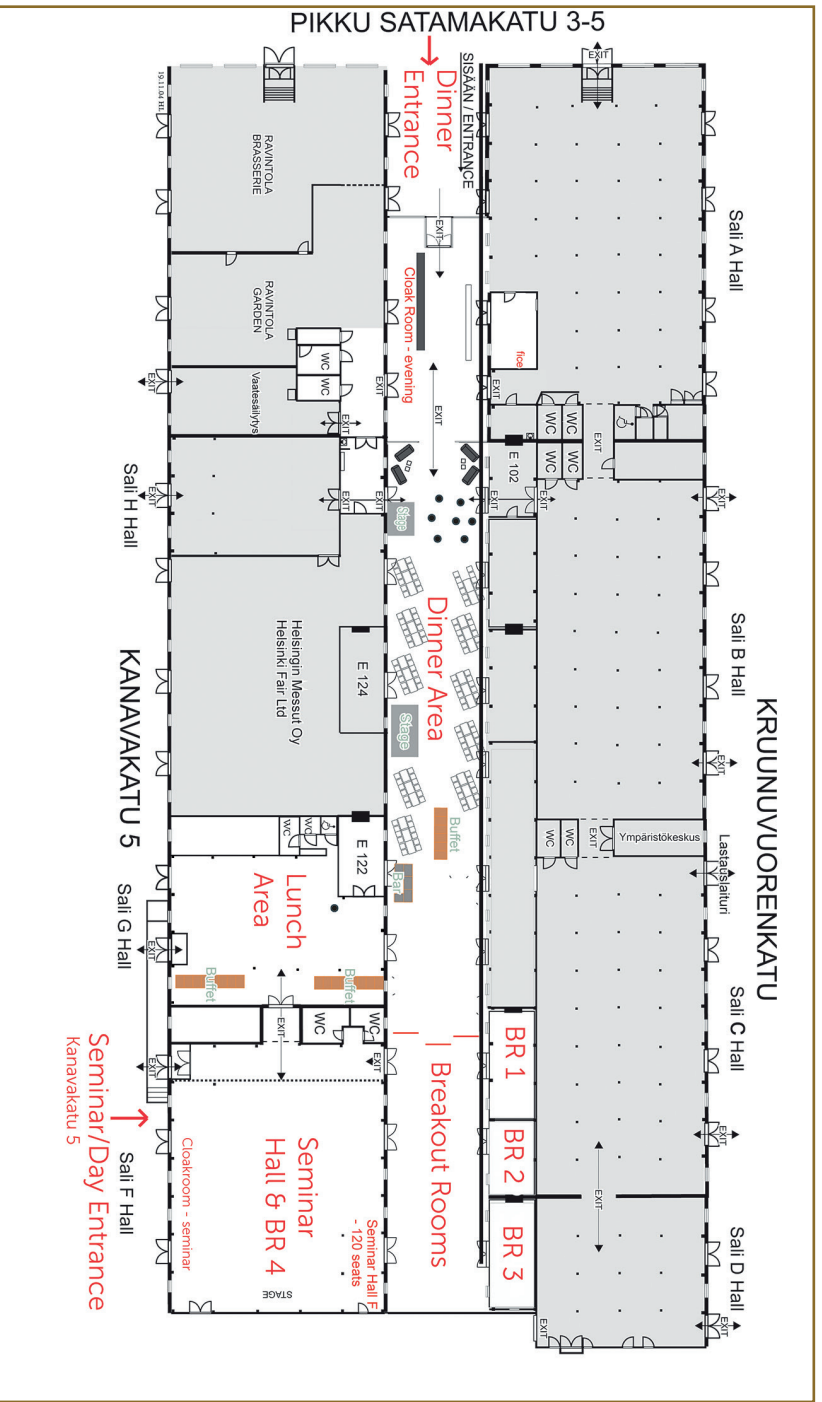
13:00 Lunch in the hotel restaurant

NOTES:

Hotel Katajanokka Map



Wanha Satama map



The image features an abstract graphic design composed of several overlapping, semi-transparent geometric shapes. On the left, there is a dark blue shape that overlaps a light blue shape. A brown shape overlaps both the light blue and the dark blue shapes. On the right, another light blue shape overlaps the brown shape. The bottom portion of the image is a solid light blue rectangle. Centered within this rectangle is the text 'www knowledge-exchange info' in a white, lowercase, sans-serif font.

www knowledge-exchange info